

永鈿潤滑科技有限公司
YUNG TIEN LUBRICATION TECHNOLOGY CO., LTD.

台中市神岡區大豐路五段295巷21號
NO.21, LANE 295, SEC 5, DAFENG RD., SHENGANG
DIST., TAICHUNG CITY 429, TAIWAN
TEL:886-4-25284429 FAX:886-4-25242345
E-mail: chiba.tw@gmail.com
<http://www.chiba.com.tw>

大陸辦事處：

東莞功昱機械五金有限公司
東莞市長安鎮廈崗復興路33號金銘國際工業模具城8棟7B
TEL:0769-81666313



微量潤滑冷卻系統

OIL MIST LUBRICATING & COOLING SYSTEM

MQLS



MKU-2



AMP-3F



AMLS-1



精密主軸軸承需連續、穩定、微量油 / 氣潤滑，對於控制溫升、主軸的壽命、及加工技術提升都有極大幫助，更是主軸及潤滑系統的一大提升。

Precision Spindle bearings need the continuous .stable and trace amounts oil /air Lubricating. That's great help for the temperature rise control. Spindle life and processing technology upgrade. Also the upgrade for the spindle Lubrication system



- 空氣壓力 Air pressure: 0.3MPa ~ 0.45MPa
- 請使用乾燥空氣 Dry air input

- 使用溫度範圍 Temperature range : 5°C ~ 40°C
- 使用黏度範圍 Oil viscosity range : 10# ~ 40#

ASK 空壓式注油機

AIR TYPE ENGINE OIL



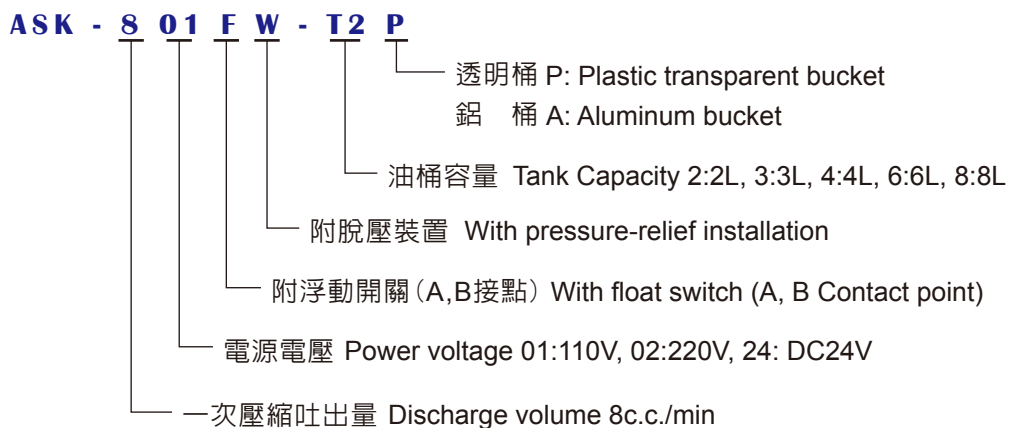
ASK-8FW
脫壓式
Pressure-relief

功能特長 FUNCTION AND FEATURES

1. 可由外部接收信號，快速同步作動噴油。
 2. 適合高頻率快速給油。
 3. 可配合定量油氣混合分配器DM-A型，作潤滑冷卻。
 4. 可作噴點式或噴霧式兩種用途。
1. Receiving sign from exterior, working synchronization and fast
 2. Suits in high-frequency and supply oil fast.
 3. It's using in lubrication cooling, and cooperate with quantitative oil-gas mix distributor type DM-A.
 4. Using for two ways: oil-mist and Injection.

		ASK-8F	ASK-8FW
幫浦壓縮比	Pump compress rate	1 : 5(空氣壓力)	
一次壓縮吐油量	Output volume	8 cc	
最高吐出頻率	Max. output frequency	依油之黏度 (35cSt~2000cSt) 30~12回/每分鐘	
使用油之黏度	Oil viscosity	10~2000 (cSt)	
空氣壓力和空氣消耗量	Air Pressure & consume	4 kgf/cm ² 0.27 NI/g一次吐出	
		5 kgf/cm ² 0.30 NI/g一次吐出	
出油量	Output quantity	總吐出量約 Total output quantity: 6 cc (使用0.5cc閥時可供給12個噴點) (Suply 12 ports for each 0.5cc)	
油箱容量(L)	Oil tank capacity	標準Normal: 2, 選訂Select: 3, 4, 6, 8	
電磁閥規格	Solenoid type	三口兩位電磁閥Three ways solenoid 電壓Voltage : AC110V, AC220V	
浮球開關	Float switch	A, B接點 最大使用電壓AC, DC 200V 接點容量30W, 抵抗負荷0.5A以內	

規格說明 SPECIFICATION



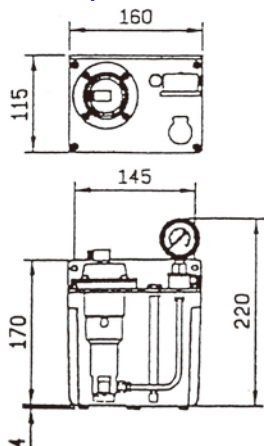
ASK 空壓式注油機

AIR TYPE ENGINE OIL

尺寸圖 DIMENSION

2L外部相關尺寸圖

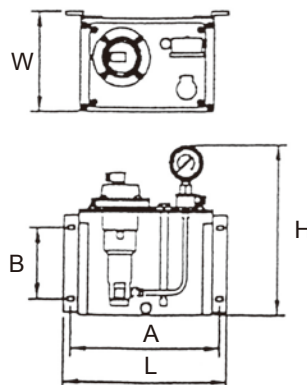
2L Outside Specification



【噴油式】
Spout type
【噴油霧式】
Misty type

3L, 4L, 6L, 8L外部相關尺寸圖

3L, 4L, 6L, 8L Outside Specification



【噴油式】
Spout type
【噴油霧式】
Misty type

型式 Model	A x B (mm)	長 L(mm)	寬 W(mm)	高 H(mm)	油桶容量 Tank Capacity
T-3L	200 x 95	220	130	230	3.10 (L)
T-4L	240 x 110	260	130	245	4.09 (L)
T-6L	320 x 110	340	145	245	6.09 (L)
T-8L	340 x 110	360	180	245	8.10 (L)

定點定量接頭(噴點式)

FSS



FST



功能特長 FUNCTION AND FEATURES

定量接頭是由油壓幫浦，藉著活塞的活門運作，將油(液)定量準確地送給各個潤滑點的接頭。

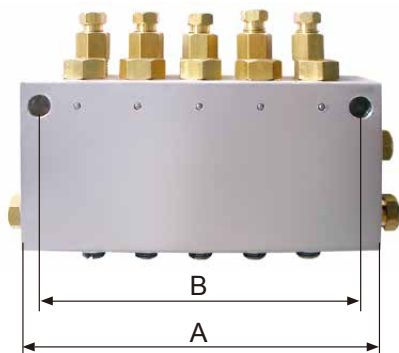
A certain joint is activated by piston valve according to the hydraulic pump, and by means of oil quantitative to deliver the each joint of lubricating station.

		FSS	FST
分類番號 Category No.		03 06 10 16	
流量比 Flow ratio		0.03, 0.06, 0.10, 0.16	
接頭口徑 Joint bore	IN	M10 x 1.0	M10 x 1.0
	OUT	M10 x 1.0	PT 1/8
使用壓力 Pressure applied		1.5 ~ 20kg/cm ²	
使用油黏度 Oil viscosity		20 ~ 500cst	

DM-A

定量油氣混合分配器

QUOTA OIL GAS MIX DIVIDER



型式 Model	吐出口數 Number of port	吐出量 Discharged amount	尺寸 Size mm	
			A	B
DM-1A	1	0.03 cc	35	24
DM-2A	2	0.06 cc	50	39
DM-3A	3	0.08 cc	65	54
DM-4A	4	0.10 cc	80	69
DM-5A	5	0.16 cc	95	84

MKU-2

脫壓式潤滑幫浦

PRESSURE-RELIEF LUBRICANT PUMP



MKU-2FW-T2P

2L規格



MKU-2FW-T4P

4L規格



MKU-2FW-T6A

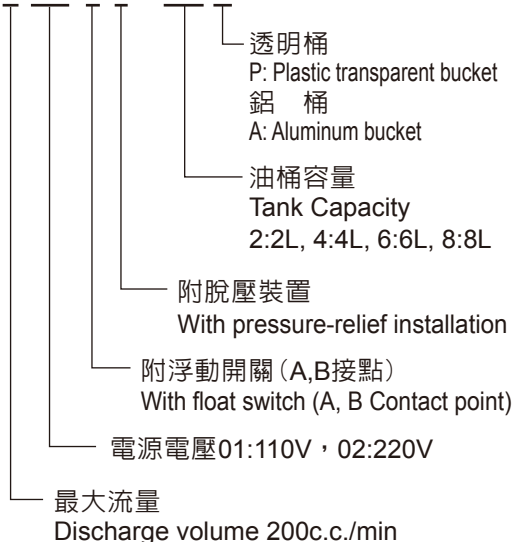
6L規格

MKU-2FW

馬達(蔽級式)	Motor(Shield type)	50HZ · 125W · 1.55A 60HZ · 98W · 0.94A
吐出量	Output volume	0.2L/MIN
最大吐出壓力	Max. vomit volume	20KG
電壓	Voltage	110V/220V
定格電流	Rated Current	110V/220V 3A
全容量	Full capacity	2L (4.6.8.10.12)
有效容量	Effective capacity	1.8L (4.6.8.10.12)
檢知壓力	Detective pressure	12 kg/cm ² ON
檢知壓力	Deterctive pressure	8 kg/cm ² OFF
遮斷容量	Shield off capacity	176/248 VA 110/220V
最大遮斷電流	Max. shield off current	3A
最大遮斷電壓	Max. shield off current	AC250V
最小通過電流	Min.current through	10UA

規格說明 SPECIFICATION

MKU-201FW-T2P



配電控制說明 DIRECTION OF POWER DISTRIBUTION CONTROL

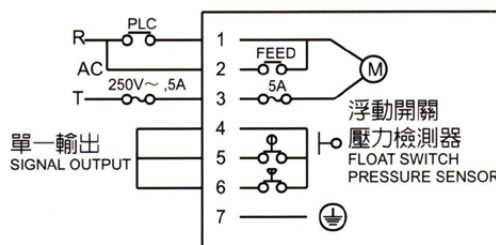
MKU-2FW

■ 無時間控制型可由PLC指令控制作動週期

- 1.3 電源接點
- 2.3 手動注油接點
- 4.5 浮動開關接點A或B, 最大電流250V/0.1A
- 4.6 壓力檢知接點
- 7 接地

Without time controller model cycle movement can be controlled by PLC digital

- 1.3 Power contact point
- 2.3 Manual oil filling contact point
- 4.5 Float switch contact point, A or B, max. current 250V/0.1A
- 4.6 Pressure detective point
- 7 Ground connection



MKU-2

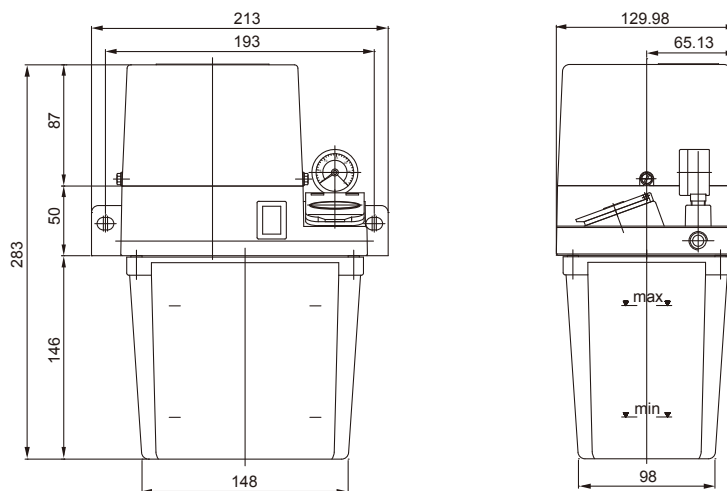
脫壓式潤滑幫浦 PRESSURE-RELIEF LUBRICANT PUMP

規格表 SPECIFICATION

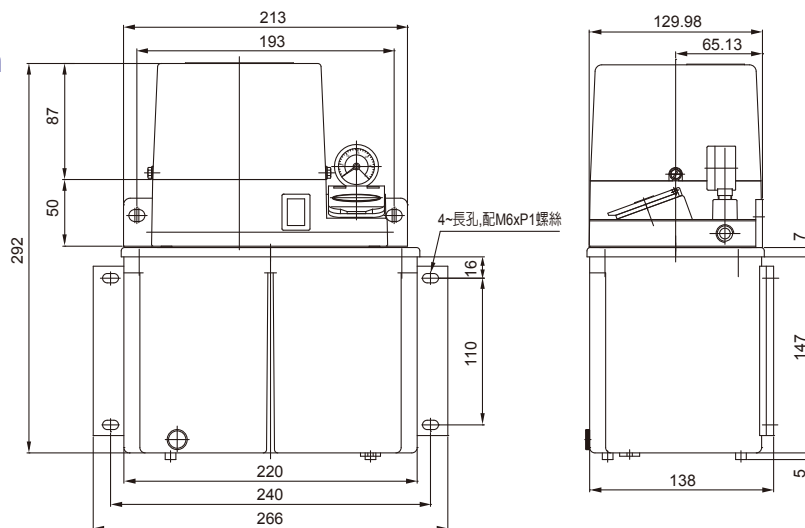
型式 Model	流量 Outlet	電壓 Voltage	浮動開關 Float switch	脫壓裝置 Pressure release unit	使用壓力 Pressure applied	休止時間 Release time	運轉時間 Running time
脫壓式 Pressure-relief	MKU-201FW	0.2L/MIN	110V	○	20 kg/cm ²	PLC 控制	PLC 控制
	MKU-202-FW		220V	○			

尺寸圖 DIMENSION

■ 2L外部相關尺寸圖 2L Outside Specification



■ 4L~12L外部相關尺寸圖 4L~12L Outside Specification



型式 Model	A x B (mm)	長 L(mm)	寬 W(mm)	高 H(mm)	油桶容量 Tank Capacity
T-2L	193	213	129	283	2 (L)
T-4L	240 x 110	220	138	292	4 (L)
T-6L	320 x 110	280	145	292	6.09 (L)
T-8L	340 x 110	300	180	292	8.10 (L)
T-10L	370 x 110	320	180	292	10.10 (L)
T-12L	390 x 110	350	230	292	12.07 (L)

功能特長 FUNCTION AND FEATURES

1. 壓力輸出方式為可調式的輸出結構，符合各種機器的需求，可做出相對壓力的匹配調整。
 2. 附有油位檢知裝置，測知儲油箱內供油的存量，適時反應回報，連接應變動作。
 3. 立即鈕即時需求按鍵裝置，可使機器在剛開始使用時，便立即得到應有之油量可順暢啓動，減少不必要摩擦。
 4. 深入底部吸油，應用巴斯卡(Pascal)原理，使得出油功率大為提高，並能清除掉油管中空氣間隔的缺失。
 5. 配有油壓檢知裝置(3~10kg/cm²)特性，可偵測反應下列漏失：
 - ★ (一) 管路破裂：測知管內壓力不足。
 - ★ (二) 油網阻塞：測知油料混濁吸油口阻塞。
 - ★ (三) 馬達不良：測知馬達運轉不良。
 - ★ (四) 油壓不足：測知零件汰舊，輸出功率不良等致使壓力不足的情況。
 - ★ (五) 油桶無油：油位低於安全量會警報輸出。
1. Pressure output is designed with adjustable output structure to meet the demand of various machines and available to couple with relative pressure adjustment.
 2. Designed with oil level detector to detect the oil capacity stored in the tank and response well at appropriate time to succeed for connection movement step.
 3. Instant knob to have devised with in-time demand button and lets machine, while at initial start, have the deserved oil capacity for smooth operation to reduce unnecessary friction.
 4. Absorbs oil from the deepest part and makes use of principle of Pascal to increase greatly the oil output power as well as to remove the shortcoming of gap between oil tubes.
 5. Designed with oil pressure detector (3~10kg/cm²), featured as follows to detect for the loss below:
 - ★ (1) Broken oil tube: detecting if insufficient pressure inside the tube.
 - ★ (2) Blockaded oil network: detecting if any blockaded on oil inlet for the sake of turbid oil condition.
 - ★ (3) Poor motor: detecting if the motor had poor running,
 - ★ (4) Insufficient oil pressure: detecting if the output power is insufficient for old used part to result in insufficient pressure condition.
 - ★ (5) No oil in the tank: Detecting and alarm output if the oil level than the safe level.

使用說明 DIRECTION OF USE

1. 使用MKU-2FW型附有脫壓結構型時可配合使用定量容積式分配器DPB、HBL、HA，並可增設壓力檢知回饋，以確認管路壓力是否達到標準20kg/cm²使用壓力檢知回饋信號時，必須增設延時TIMER及偵測TIMER在正常時壓力開關確認後而帶動延時TIMER計時適時的動作，反之在偵測時間60秒內無法達到所設定的壓力時，必須設定警報及斷電，繼而檢查各項的缺失。
 2. 因使用地區的溫度不同，使用者必須注意因溫差所導致油粘度變化，而更換適合的油質及使用壓力，氣溫在20°以下的則可選用20#的機油，而氣溫在20°以上的則可選用30#的機油，而使用的壓力也必須有所調整。
1. When use of TM-3FW, 3CFW with pressure-relief structure model, DPI distributors DPB, HBL, HA can be mated for use. Also, they can be added with pressure detector to feedback and confirm if the pressure of the pipe is compliance with the standard specification 20kg/cm². When use of pressure detector feedback signal, the TIMER delay must be setup. When detecting TIMER under normal pressure switch and confirmed, then TIMER delay is actuated at appropriate time. Otherwise, if the detecting failed to reach the preset pressure within 60 seconds, an alarm signal and power-off must be setup to check for every failure or default.
 2. Because the temperature of different areas is varied, the user must pay attention to the change of oil viscosity caused by different temperature degree to replace with appropriate oil and pressure applied. If temperature under 20°, the engine oil #20 is recommended for use. While for temperature above 20°, then #30 is recommended. Also, the pressure applied also has to be adjusted.

AMP

油氣混合噴霧式潤滑冷卻切削幫浦 OIL MIST LUBRICATING PUMP

AMP-3F

無時間控制
Without time controller

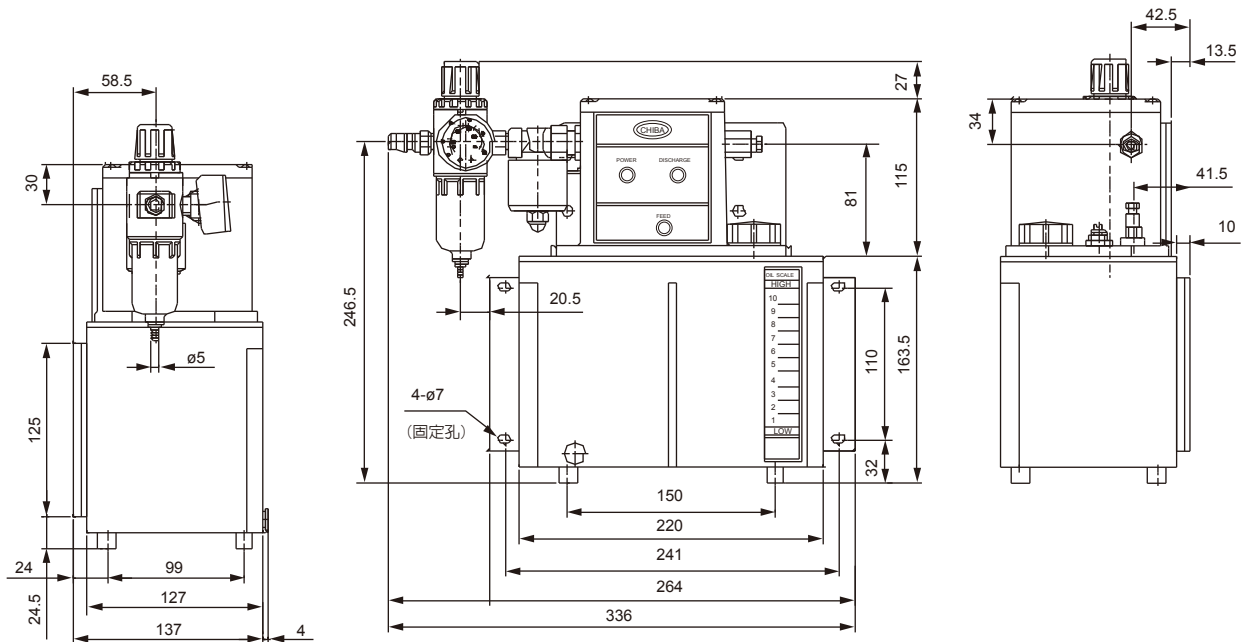


AMP-3CF

有時間控制
With time controller



外觀及安裝尺寸 DIMENSION



規格說明 SPECIFICATION

AMP - 3 01 C F - T4 P

- 透明桶 P: Plastic transparent bucket, 鋁桶 A: Aluminum bucket
- 油桶容量 Tank Capacity 4:4L
- 附浮動開關 With float switch
- 時間控制 With timer controller
- 電源電壓 Power voltage 01:110V, 02:220V
- 每分鐘吐油量 Discharge volume 300c.c./min

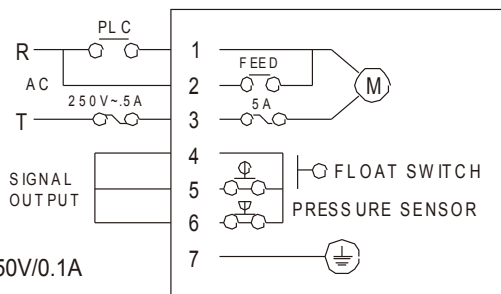
規格表 SPECIFICATION

型式 Model	流量 Outlet	電壓 Voltage	浮動開關 Float switch	脫壓裝置 Pressure release unit	使用風壓 Pressure applied	休止時間 Release time	運轉時間 Running time
AMP-301F	0.3 / 0.36 L / min	110 V	O	X	3-7 kg/cm ²	PLC 控制	PLC 控制
AMP-302F		220 V	O	X			
AMP-301CF		110 V	O	X		1-99 min.	1-99 sec.
AMP-302CF		220 V	O	X			



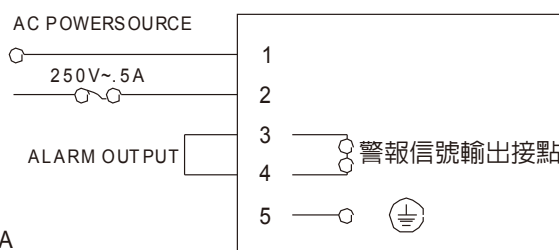
AMP-3F 電源接線圖

- 1.3 電源接點
- 2.3 手動注油接點
- 4.5 浮動開關接點AorB，最大電流250V/0.1A
- 4.6 壓力檢知接點
- 7 接地
- 1.3 Power contact point
- 2.3 Manual oil filling contact point
- 4.5 Float switch contact point, AorB, max. current 250V/0.1A
- 4.6 Pressure detective point
- 7 Ground connection



AMP-3CF 電源接線圖

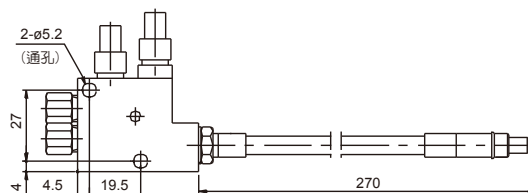
- 1.2 電源接點
- 3.4 異常狀態下警報輸出接點，最大電流1A
- 5 接地
- 1.2 Power contact point
- 3.4 Under abnormal condition, alarm output contact point, max. current 1A
- 5 Ground connection



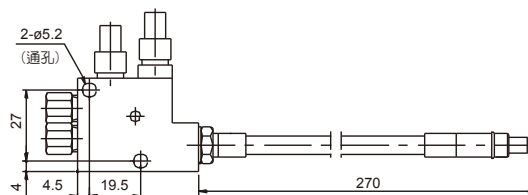
有時間控制型面板操作說明 Operation Direction for Model with time controller

- | | |
|-----------------------------|--|
| RST鍵 — 係依DIS設定之秒數手動注油。 | RST Button DIS preset by second for manual oil filling. |
| FEED鍵 — 係手動控制注油(鬆手即停)。 | FEED Button Manual control oil filling (Stop when hand is released.) |
| DIS鍵 — 作動時間設定鍵，1-99秒自由設定。 | DIS Button Running time touch button, 1-99 seconds free setting. |
| INT鍵 — 作動間歇時間觸控鍵，1-99分自由設定。 | INT Button Interval time touch button, 1-99 minutes free setting. |

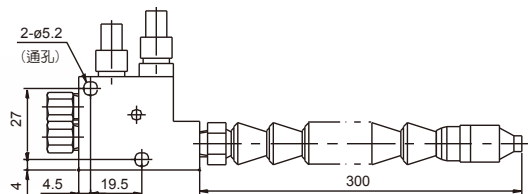
LMV-1-200L 銅軟管噴槍



LMV-2-270L 金屬軟管噴槍



LMV-3-300L 塑膠軟管噴槍



規格說明 SPECIFICATION

LMV- 1 - 300L

管長度 Length (mm) 100L, 200L, 300L

1: 銅管Brass 2: 金屬管Metal 3: 塑膠管Plastic

LMD-A 油氣分配器

OIL MIST DISTRIBUTOR

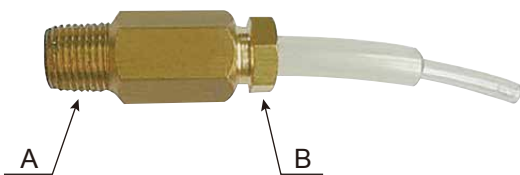


型式 Model	吐出口數 Number of port	吐出量 Discharged amount	尺寸 Size mm	
			A	B
LMD-1A	1	0.03 cc	35	24
LMD-2A	2	0.06 cc	50	39
LMD-3A	3	0.08 cc	65	54
LMD-4A	4	0.10 cc	80	69
LMD-5A	5	0.16 cc	95	84

搭配入風與油，結合霧化並且於末段可依需求調整油量與風量，以達到最佳知霧化效果

SPD 霧化接頭(噴霧式)

SPRAY CONNECTOR



型式 Model		尺寸 Size mm	
		外牙A	內牙B
SPD-601	32 MM	1/8PT	6mm
SPD-602	32 MM	1/4PT	6mm
SPD-802	40 MM	1/4PT	8mm
SPD-803	40 MM	3/8PT	8mm

AMLS 精密微量潤滑冷卻切削泵

MICRO LUBRICATING & COOLING OIL-MIST SYSTEM

AMLS-2

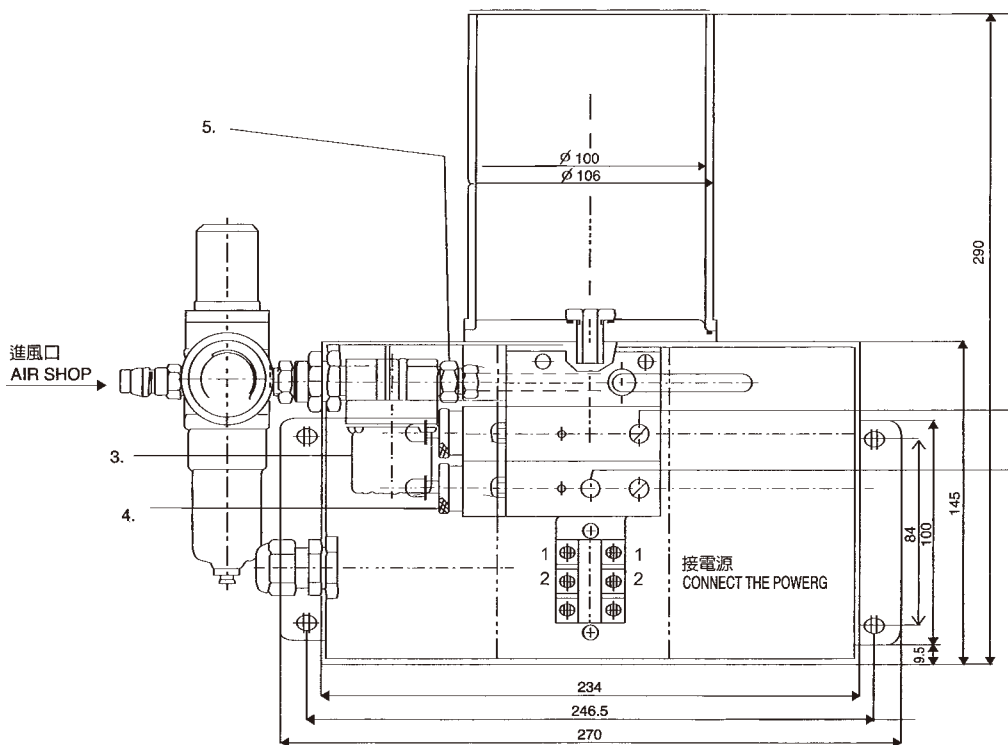


規格說明 SPECIFICATION

AMLS - 2 02 - T1P

- 油箱 Oil tank
1: 1L, plastic tank, 2: 2L
- 電壓 Voltage
01:110V, 02:220V, 24: DC24
- 噴管數
1, 2, 3

外觀及安裝尺寸 DIMENSION



1. 空壓計量調整螺絲
Knurled air
metering screw
2. 排氣孔螺絲
Drain Plug
3. 電磁閥
Air pilot valve
location
4. 油量調整鈕
Brass adjustment
knob
5. 脈波產生器調整處
Pulse generator
adjustment



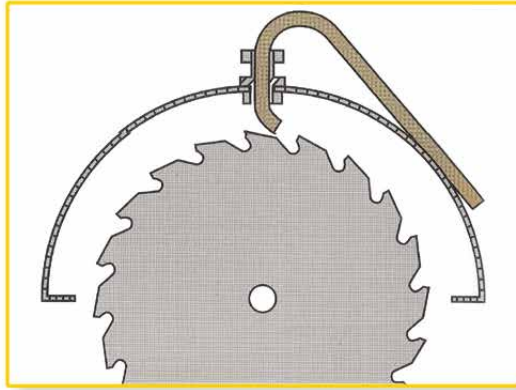
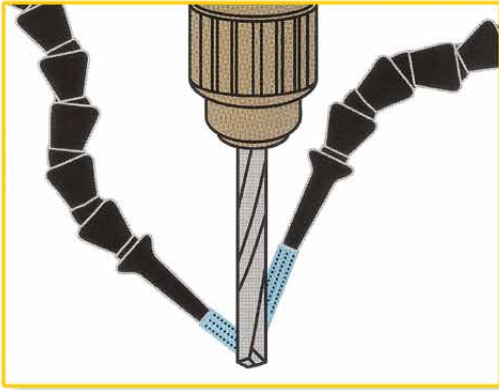
油管規格 SPECIFICATION

SPT - 100L

- 長度 Length(mm)
300 / 200 / 100
- 銅 SCT: Copper
- 金屬軟管 SIT : Iron
- 塑膠 SPT: Plastic

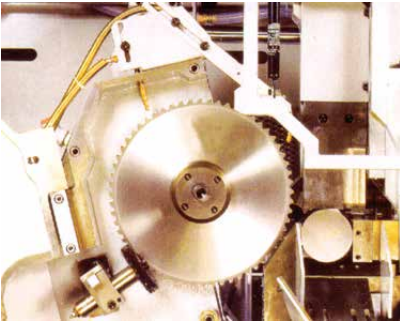
AMLS 精密微量潤滑冷卻切削泵

MICRO LUBRICATING & COOLING OIL-MIST SYSTEM



Nozzle positioning for Drilling / Tapping

Lubricate the drilling tip and down into the flutes.



適用：鋸床、車床、銑床、鑽床、
專用機、加工中心機、雕刻機

Use to lathe sawing machine,
Milling machine, Drilling machine,
Carving machine, Machine centre.



推薦油品：生化合成植物性切削液
Bescut 173

Recommend: Biochemical synthetic
plant cutting oil Bescut 173

功能特長 FUNCTION AND FEATURES

1. 延長工具壽命。
 2. 提高進刀量。
 3. 加工精度提昇。
 4. 面粗度提昇。
 5. 減少甚至免加工物洗淨工程。
 6. 提昇工廠作業環境。
 7. 降低人體與環境的污染。
 8. 設有液位開關，立即反應異常訊號。
1. Extend machine life.
 2. Increase the knife speed.
 3. Increase the working piece precision.
 4. Working piece surface brighter.
 5. Reduce, even no cleaning of working piece.
 6. Improve the environment of factory.
 7. Reduce the human body bums and environment pollution.
 8. Option with liquid switch which reflect the abnormal signal.

建議噴嘴安裝數 RECOMMENDED NUMBER OF NOZZLES

1. 帶鋸切斷加工 Band saw cutting		2. 銑床加工 Milling machine processing	
刀幅 Saw breadth	噴嘴數 Number of nozzles	進刀方向 Direction of cutter	噴嘴數 Number of nozzles
~40mm	2組 2 sets	1方向 one way	1組 1 sets
40mm以上 over 40mm	3組 3 sets	2方向 two ways	2組 2 sets
		多方向 Several ways	3組 3 sets

3. 鑽孔、攻牙、絞刀加工 Drilling, tapping & reamer processing		4. 圓鋸片加工 Circular saw processing	
切深 Cutting Depth	噴嘴數 Number of nozzles	刀徑 Saw diameter	噴嘴數 Number of nozzles
20mm以下 under 20mm	1組 1 sets	0~250mm	1組 1 sets
20~50mm	2組 2 sets	250~700mm	2組 2 sets
50mm以上 over 50mm	3組 3 sets	700~1400mm	3組 3 sets
		50mm以上 over 50mm	5組 5 sets

OMC 油霧回收機

OIL MIST COLLECTOR

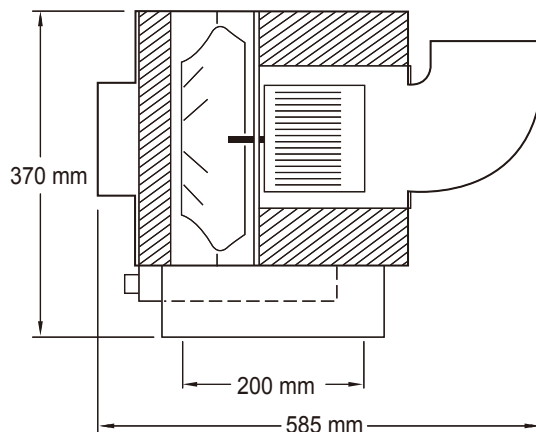
OMC-10 1/2HP



OMC-16 1/2HP



尺寸圖 DIMENSION



產品特性 FEATURES

本產品採用分級淨化模式。首先當油霧被吸入到淨化主機後，先通過第一道過濾器將大顆粒油滴過濾下來。然後小分子的油霧顆粒和油霧氣體進入到第二級的淨化單元，為厚層的空氣濾綿。中小油霧分子在此處即被隔離濾除。經過前兩段，有99%以上的油霧已被分離，另可選購外掛之第三道活性碳濾紙桶，可連同空氣中油氣味一併濾除，提高廠間的空氣品質，大大降低油氣對工作者的健康危害。

This product adopts the classified purification mode. First, when the oil mist is sucked into the purification machine, the large particles of oil-drops will be filtered by passing through the first filter. Then, small molecules of oil mist particles and gas will enter the second filter packed with thick layer air filters. Small and medium-sized oil mist molecules will be filtered in this step. More than 99% oil mist has been separate after the two filtration steps. In addition, an optional third plug-in activated carbon filter drum can remove the petroleum odor in the air in the meantime, improve the air quality of the plants and significantly reduce the health hazards of workers resulted from the oil gas.

環保淨化 Environmental protection and purification:

葉片旋轉時採用離心力原理，壓力高，噪音低，風量大，可迅速將加工機內的油霧吸出，免於對人體健康的影響。

Blade rotation applies the principle of centrifugal force to produce high pressure, low noise and large wind amount. That will quickly suck out the oil mist in the processing machine and be free from the impact on human health.

節能減碳 Carbon reduction:

在設有中央空調的加工生產廠內，在加裝油霧回收機後可避免冷氣外洩，加強冷房效果也降低電源的耗費。對於機台的壽命及效率也大幅提高。

Processing factory equipped with central air conditioning will avoid cold air leakage, enhance the effects of cold room and reduce the power consumption with the installation of oil mist recycling machine as well as extend the machine life and improve the efficiency significantly.

適用範圍 SCOPE OF APPLICATION

車床、CNC綜合切削加工機、加工中心機、放電加工機、滾齒機、磨床等具密閉式空間作業之油霧回收處理。

Applications: the oil mist recycling of lathes, CNC cutting machines, machine centers, electrical discharge machines, hobbing machines and grinders with operations in confined spaces.

規格表 SPECIFICATION

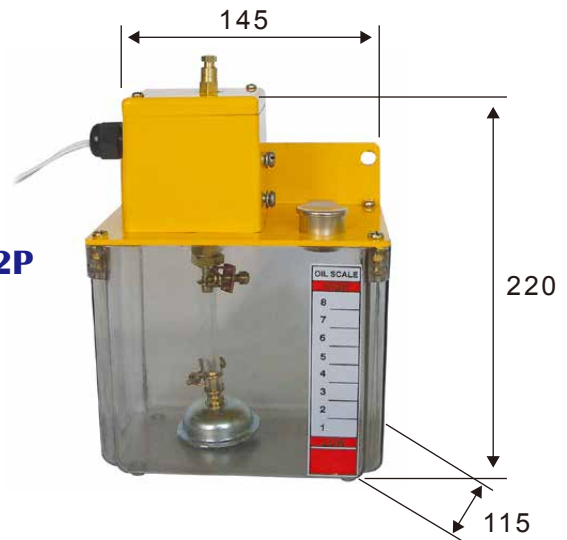
型號 Model	馬力 Motor	安裝尺寸 Dimensions	外觀尺寸 Outward size	入出風口徑 Enters & out caliber	電壓 Power	風量 Amount of wind
OMC-10	1/2HP	200 x 230	285 x L585 x H370	5 x 5"	110/220 V	10m ³ /min ±10%
OMC-16	1/2HP	200 x 230	330 x L585 x H420	6 x 5"	110/220 V	16m ³ /min ±10%

YEM 電磁式幫浦 SOLENOID PUMP

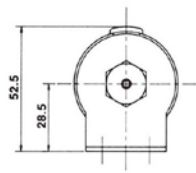
YEM-25



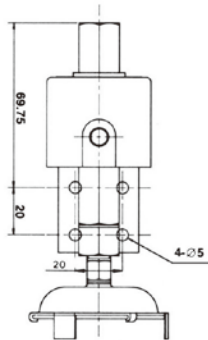
YEM-25-T2P



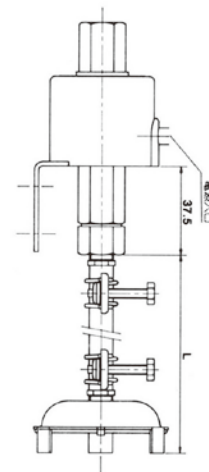
外觀及安裝尺寸 DIMENSION



YEM-25S



YEM-25L



規格表 SPECIFICATION

型式 Model	輸出功率 Output power	電源 Power	吐出量 Outlet volume	吐出壓力 Output pressure	出油口孔徑 Output bore	吸力 Suction	油箱容量 Oil tank capacity
YEM-25S	25W	110/220V	0.1 L/min	1 kg/cm ²	ø4 or ø6	1-1.5 meter	X
YEM-25L							2L
YEM-25-T2P							2L

功能特長 FUNCTION AND FEATURES

- 節省電力的損耗。
 - 體積小不佔空間。
 - 控制機動性高，可快速索引調節控制流量。
 - 可作間歇或連續使用。
- Saves the electric power consuming.
 - The volume is small does not occupy the space.
 - The mobility is high, but fast index, regulating control current capacity.
 - May make the intermittence or the long-term usage.

用途 APPLICATION

本產品使用於各類小型工作母機(車床、銑床、磨床、鉗床...)等加工機械，作為一潤滑循環系統，其效果更為顯著。

The product can be used as cyclic lubrication system for all kinds of machines such as , lathe, milling machine , grinding machine, drilling machine and other processing machine.

MS

循環幫浦

PRESSURE RELEASE RATED VOLUME

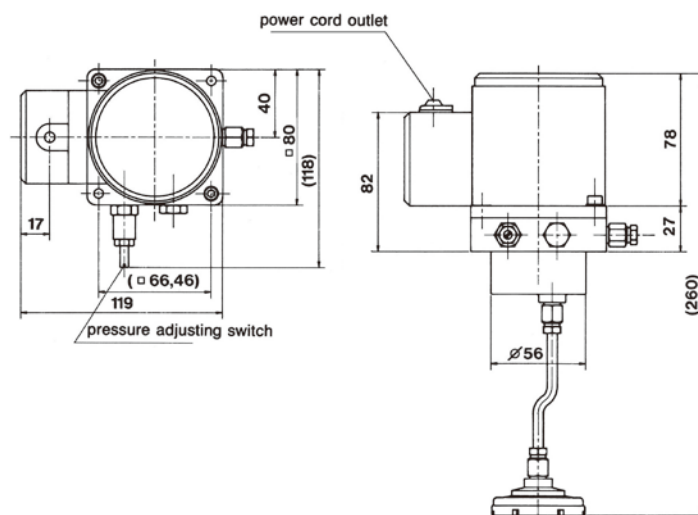
MS-3W



MS-12W



外觀及安裝尺寸 DIMENSION



規格表 SPECIFICATION

型式 Model	吐油量 Discharged capacity	吐出壓力 Discharged pressure	使用粘度範圍 Oil Viscosity (cst)	馬達樣式 Motor type
MS-3W	0.3L	1-15 kg/cm ² 可調 adjustable	20~2000	110V, 220V, 220V 3 phase
MS-5W	0.5L			
MS-12W	1.2L			
MS-24W	2.4L			

功能特長 FUNCTION AND FEATURES

1. 馬達直接傳動齒輪邦浦，流量穩定，外觀輕巧、美觀、實用。
 2. 可作間歇或連續運轉潤滑冷卻用。
 3. 邦浦可作橫、立式兩用，吸入油管長短可依須要配合。
 4. 附有壓力及流量調節鈕及脫壓裝置。
1. Motor direct drive gear pump, current capacity stable, the outward appearance dexterous, artistic, is practical.
 2. May make intermittent or continuous working lubrication cooling uses.
 3. The pump may make, the vertical dual purpose horizontally, the inspiration drill tubing length may depend on must have to coordinate.
 4. Attaches the pressure and flow control Niu and escapes presses the installment.

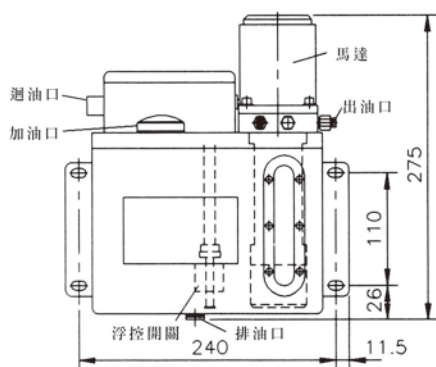
ME 循環幫浦

PRESSURE RELEASE RATED VOLUME

ME-12W



外觀及安裝尺寸 DIMENSION



規格說明 SPECIFICATION

ME - 1201W - T4A

鐵桶 Iron bucket

油桶容量 Tank Capacity
4:4L, 6:6L, 8:8L, 10:10L, 20:20L

電源電壓 Power voltage 01:110V, 02:220V

每分鐘流量 Discharge: 1.2L/min

規格表 SPECIFICATION

型式 Model	吐出量 Discharged capacity	吐出壓力 Discharged pressure	使用粘度範圍 Oil Viscosity (cst)	儲油箱容量 Oil Capacity
ME-3W	0.3L	1-15 kg/cm ² 可調 adjustable	20~2000	4L, 6L, 8L, 10L, 20L
ME-5W	0.5L			
ME-12W	1.2L			

功能特長 FUNCTION AND FEATURES

1. 壓力輸出方式為可調整式的輸出結構，符合各種機器的需求，可做出相對壓力的匹配調整。
 2. 附油位裝置，測知儲油箱內供油的存量，適時反應回報連接應變動作。
 3. 立即鈕即時需求按鍵裝置，可使機器在開始啟動時，便立即得到應有的油量順暢啟動，減少不必要的摩擦。
 4. 深入底部吸油應用巴斯卡(Pascal)原理，使得輸出功率大為提高，並清除油管中空氣間隔的缺失。
1. Pressure output is adjustable which can meet various machines' needs and make a matching adjustment to relative pressure.
 2. The oil level device can detect oil quantity in the oil tank and timely make a response to connect the adjustment actions.
 3. The instant button is a push-push for instant demand which can instantly supply machine with suitable oil quantity to let machine start smoothly to reduce frictions while machine just starts.
 4. Can absorb oil from the bottom by application of Pascal principle to greatly increase the efficiency of oil feeding and avoid the faulty of air interval in oil pipe.
 5. ME-1W, ME-2W, ME-5W, ME-8W can be input into computer to do intermittent or continuous action.

給油幫浦 OIL PUMP

單轉向式 Change direction singly



可加裝VB型調壓閥

型式 Model	理論吐油量	吐油量 outlet L/min		最高壓力 Max. pressure kgf/cm ²	最高回轉數 Max. revolution rpm	重量 Weight kg
	c.c./rev	1500rpm	1800rpm			
TOP-11A	1.5	2.2	2.7	5.0	2000	0.55
TOP-12A	2.5	3.7	4.5	5.0	1800	0.6
TOP-13A	4.5	6.7	7.5	5.0	1800	0.6

可逆轉式 Reversible



型式 Model	理論吐油量	吐油量 outlet L/min		最高壓力 kgf/cm ²	最高回轉數 rpm	重量 Weight kg
	c.c./rev	1500rpm	1800rpm			
IRA-1FS	1.16	1.74	2.08	5.0	2000	1.0
IRA-2FS	1.80	2.70	3.24	5.0	2000	1.1
IRA-3FS	2.50	3.75	4.50	5.0	2000	1.2

調壓閥

TOP ADJUSTING VALVE

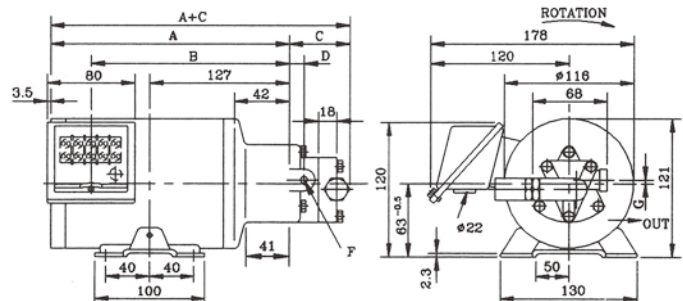


型式 Model	壓力範圍 Pressure Range
VB	0~5kg/cm ²

直結幫浦

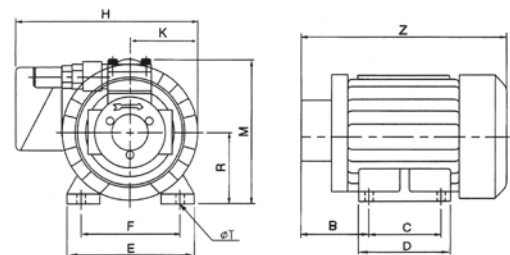
TRI-WAY PUMP

NOP-11A~13A



型式 Model	吐油量 Discharged capacity		吐出壓力 Discharged pressure	馬達出力 Motor	口徑 Caliber
	50Hz	60Hz			
NOP-11AVB	2.1	2.5	3-10 kg/cm ² 可調 adjustable	1/4 HP	1/8"
NOP-12AVB	3.5	4.3			1/4"
NOP-13AVB	6.4	7.7			3/8"

NOP-15A~40A

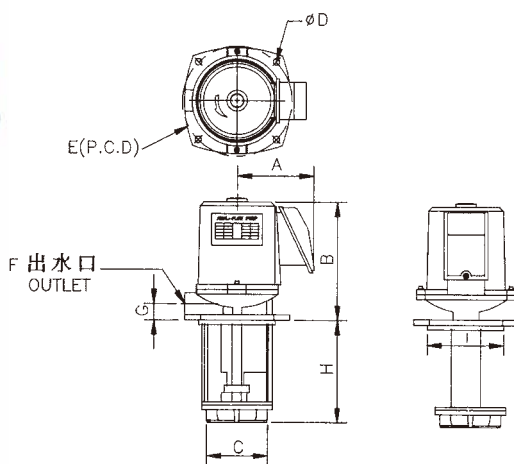


型式 Model	吐油量 Discharged capacity			最高壓力 Max. pressure	最高迴轉數 Max RPM	口徑 Caliber
	cc/rec	1500rpm/mm	1800rpm/mm			
NOP-15A	15	22.5	27	25 kg/cm ²	2000	1"
NOP-20A	20	30	36			
NOP-30A	30	45	54			
NOP-40A	40	60	72			

馬達型式 Motor Model	B	C	D	E	F	H	K	M	R	T	Z
1HP	73	100	121	156	125	225	86	172	80	10	252
2HP	75	125	157	175	140	248	100	188	90	12	284
3HP	82	125	157	176	140	248	100	188	90	12	298

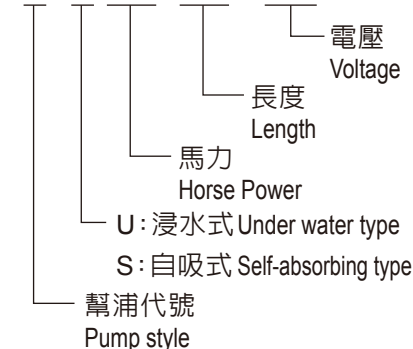
YC-U

浸水式幫浦 UNDER WATER COLLANT PUMP



規格說明 SPECIFICATION

YC-U-18-180-110



功能特長 FUNCTION AND FEATURES

1. 浸水式：本邦浦產品精良，合理的設計，優良的性能。
2. 自吸式：本邦浦係用同軸轉動軸封，防水效果佳，故障少。
3. 整體各部，材料經防鏽處理，經久耐用，電機特性採用CNC檢驗方法，經五次嚴格檢驗出廠。本邦浦為方便機械業者選購，構造尺寸皆採用MCS標準化手冊製造，使用本邦浦更能突顯機械特性。

1. Water Dipping Type : This pump is high quality , resonable design , and excellent performance.
2. Self-Absorbing Type : This pump is run by the same shaft seal with excellent water-proof , low rate of malfunction.
3. Every part of the pump is treated under anti-rust treatment for durability . Its electrical specification is inspected with CNS testing method and strict control will be done before leaving the factory . In order to be convenient for the machinery buyers , the size of this pump is manufactured according to MCS standard . So , use of this pump it will make your machine remarkable on the performance.

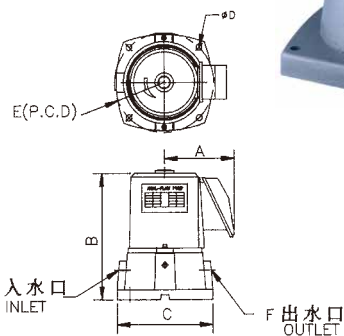
規格表 SPECIFICATION

型式 Model	馬力 HP	A	B	C	D	E	F	G	H			I	
YC-U-18	1/8	110	150	90	7	128	PT 3/8"	18	100	130	150	180	90
YC-U-16	1/6	110	150	100	7	128	PT 1/2"	18	-	-	150	180	100
YC-U-14	1/4	125	180	120	7	158	PT 1/2"	24	180	200	240	270	120
YC-U-12	1/2	135	225	135	9	170	PT 3/4"	28	175	240	280	-	135
YC-U-34	3/4	135	225	150	9	185	PT 1"	28	-	240	280	-	150
YC-U-10	1HP	135	225	150	9	185	PT 1"	28	-	240	280	-	150

型式 Model	出水口螺紋 Outlet thread	工作位差 Working difference	2米出水孔量L/PM 2m outlet volume	
YC-U-浸水式	1/8HP	PT 1/2"	5.3	24
	1/6HP	PT 1/2"	8.5	40
YC-U-SELF-ABSORBIN G TYPE	1/4HP	PT 1/2"	10.5	67
	1/2HP	PT 3/4"	15	120
	3/4HP	PT 1"	18	180
	1HP	PT 1"	20	240

YC-S

自吸式幫浦 SELF-ABSORBIN G COLLANT PUMP

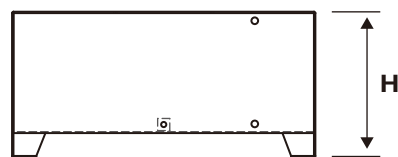
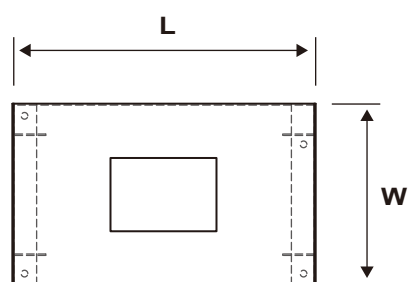
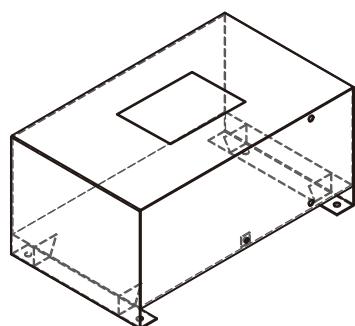
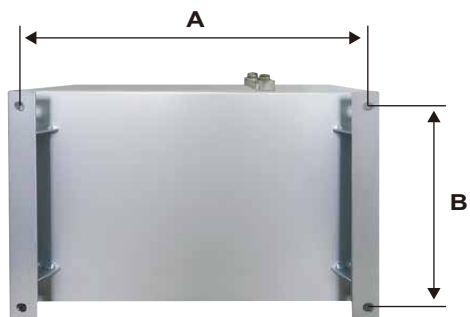


規格表 SPECIFICATION

型式 Model	馬力 HP	A	B	C	D	E	F	G
YC-S-18	1/8	110	180	140	7	140	PT 3/8"	45
YC-S-16	1/6	110	180	140	7	140	PT 1/2"	45
YC-S-14	1/4	125	240	185	7	185	PT 1/2"	65
YC-S-12	1/2	135	280	195	9	215	PT 3/4"	85
YC-S-34	3/4	135	300	200	9	220	PT 1"	85
YC-S-10	1HP	135	300	200	9	220	PT 1"	85

型式 Model	出水口螺紋 Outlet thread	工作位差 Working difference	2米出水孔量L/PM 2m outlet volume	
YC-S-自吸式	1/8HP	PT 3/8"	4.5	20
	1/6HP	PT 1/2"	8	30
YC-S-SELF-ABSORBIN G TYPE	1/4HP	PT 1/2"	11.5	58
	1/2HP	PT 3/4"	15	120
	3/4HP	PT 1"	18	180
	1HP	PT 1"	20	240

循環用油箱 METAL TANK



型式 Model	固定螺絲孔距 AxB (mm)	長 L (mm)	寬 W (mm)	高 H (mm)
10A	370 x 110	320	185	150
12A	390 x 110	350	230	155
20A	365 x 210	400	250	240
30A	460 x 258	490	200	300

冷卻切削管組 CUTTING COOLING TUBE SET



★可依需求訂製