



ORDERING CODE

RGP(V) - F3 ** - R ** * - * C

RGP: Gear Pump
RGPV: Gear Pump with Relief valve

Series Number

Nominal Discharge

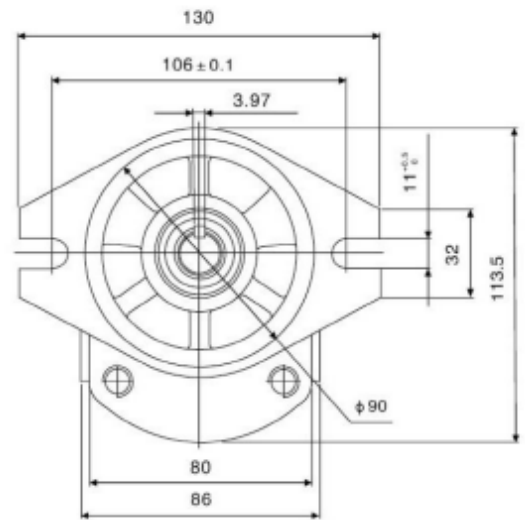
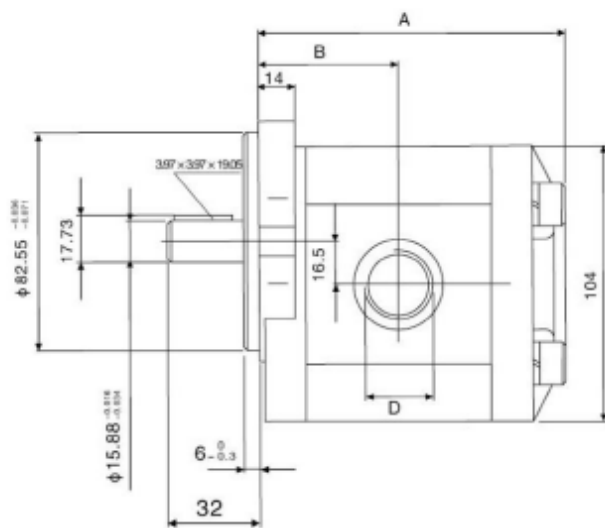
Rotation (from shaft side)
R: clockwise
L: anti-clockwise

Mounting Flange
Omit: 2 bolt
4: 4 bolt

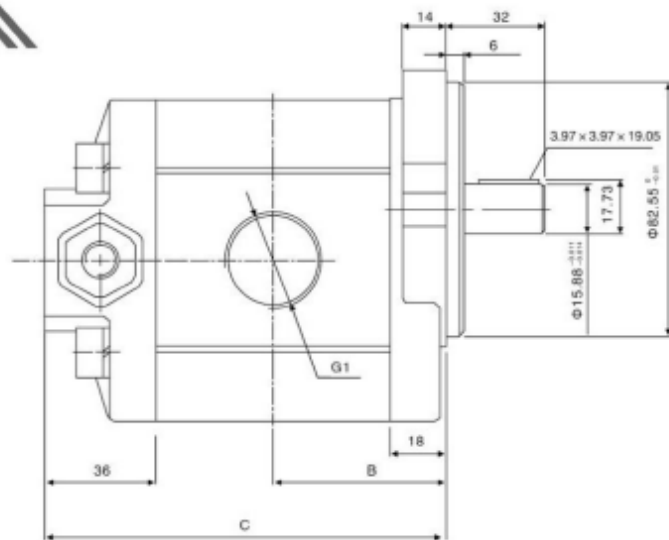
In/Outlet Port
Omit: thread
F: flange

Shaft Type
Omit: \varnothing 15.88 square key
19/17: \varnothing 19.05/ \varnothing 17.46 square key
S*: SAE * spline

Model	Displacement cc/rev	Pressure bar (psi)		Speed rpm		Weight kg	
		Rate	Max	Max	Min	2bolt	4bolt
RGP-F304C	4	280 (4000)	300 (4400)	3500	500	2.35	2.50
RGP-F306C	6					2.45	2.60
RGP-F308C	8					2.55	2.70
RGP-F310C	10					2.60	2.80
RGP-F312C	12					2.69	2.85
RGP-F314C	14					2.73	2.88
RGP-F316C	16					2.85	3.01
RGP-F318C	18					2.96	3.12
RGP-F320C	20					3.06	3.20
RGP-F323C	23					3.25	3.29
RGP-F325C	25					3.27	3.41
RGP-F328C	28					3.50	3.64
RGP-F330C	30					3.30	3.70

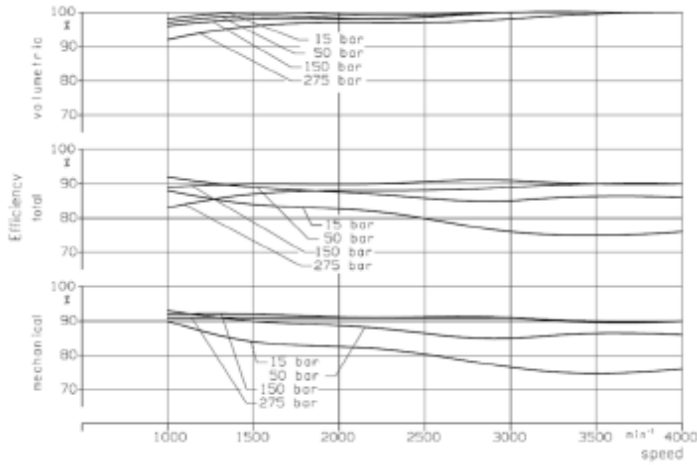


RGP (V)

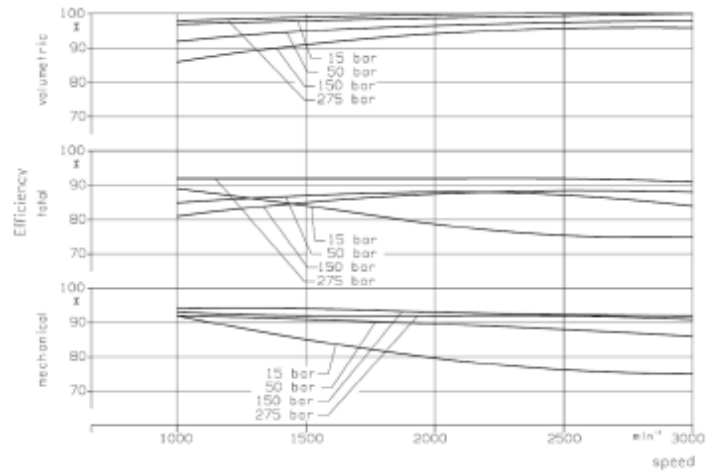


Model	A(mm)	B(mm)	C(mm)	D	
				Inlet	Outlet
RGP-F304C	96	43	10.45	PT1/2	PT1/2
RGP-F306C	98	45	1.8		
RGP-F308C	102	47	111		
RGP-F310C	104	48	114		
RGP-F312C	108	49.5	117		
RGP-F314C	110	51	120	PT3/4	PT1/2
RGP-F316C	114	52.5	123		
RGP-F318C	117	54	126.5		
RGP-F320C	120	56	130		
RGP-F323C	123	58	134.5		
RGP-F325C	128	59.5	137		
RGP-F328C	133	63	142		
RGP-F330C	136	64	145		

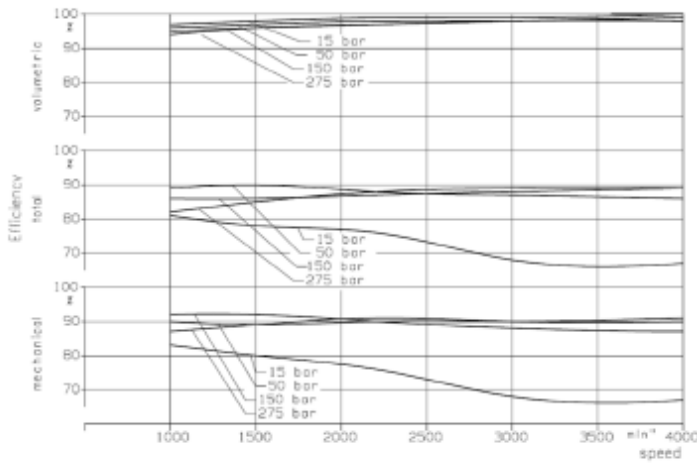
RGP-F306C (Average ±3% of 30 cSt)



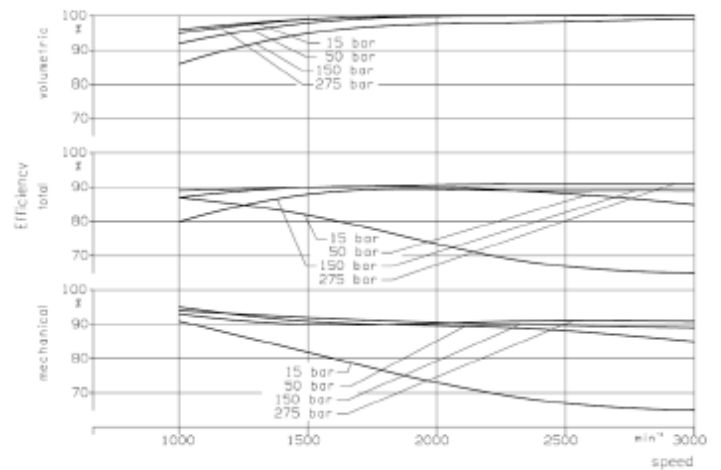
RGP-F316C (Average ±3% of 30 cSt)



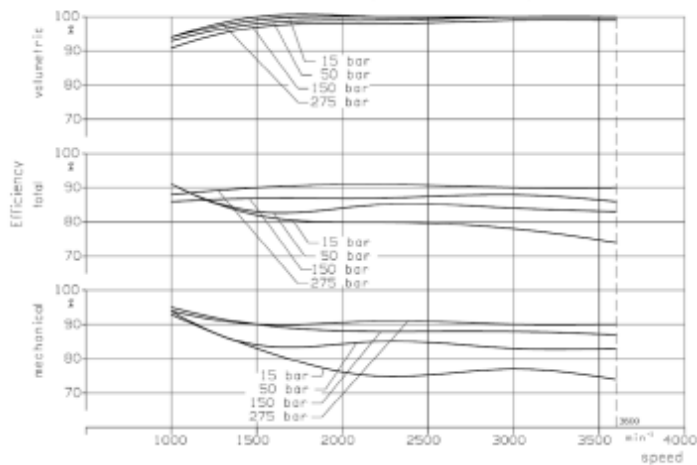
RGP-F308C (Average ±3% of 30 cSt)



RGP-F318C (Average ±3% of 30 cSt)



RGP-F310C (Average ±3% of 30 cSt)



RGP-F323C (Average of ±3% 30 cSt)

